

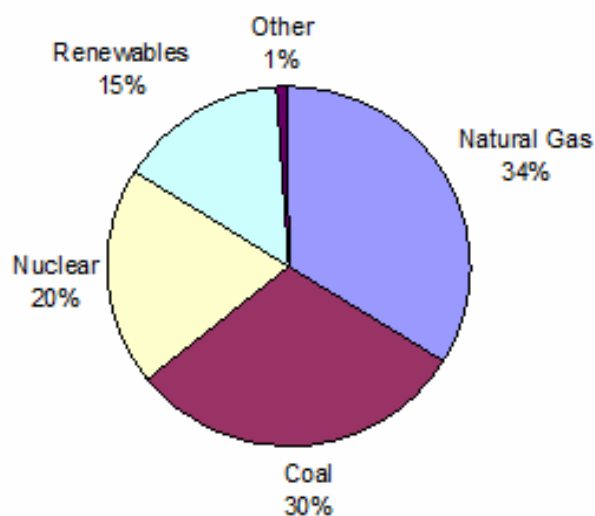
## What is U.S. electricity generation by energy source?

In 2016, about 4 trillion kilowatthours (kWh) of electricity were generated at utility-scale facilities in the United States. About 65% of this electricity generation was from fossil fuels (coal, natural gas, petroleum, and other gases), about 20% was from nuclear energy, and about 15% was from renewable energy sources. The U.S. Energy Information Administration (EIA) estimates that an additional 19 billion kWh (or about 0.02 trillion kWh) of electricity generation was from small-scale solar photovoltaic systems in 2016.

Major energy sources and percent shares of U.S. electricity generation at utility-scale facilities in 2016:

- ◆ Natural gas = 33.8%
- ◆ Coal = 30.4%
- ◆ Nuclear = 19.7%
- ◆ Renewables = 14.9%
  - Hydropower = 6.5%
  - Wind = 5.6%
  - Biomass = 1.5%
  - Solar = 0.9%
  - Geothermal = 0.4%
- ◆ Petroleum = 0.6%
- ◆ Other gases = 0.3%
- ◆ Other nonrenewable sources = 0.3%
- ◆ Pumped storage hydroelectricity = 0.2%

U.S. Electricity Generation by Source



Check us out on Facebook. Go to Facebook search and type in Nat Gas. It should bring up Nat Gas, Interstate Municipal Gas Agency. Hope to see your friend request on our site.



Also, check out our newly updated website: [www.IMGA.org](http://www.IMGA.org).

## IMGA Member Communities

Aledo, Illinois  
Auburn, Illinois  
Bethany, Illinois  
Chester, Illinois  
Cobden, Illinois  
Corning, Iowa  
Creal Springs, Illinois  
Divernon, Illinois  
Enfield, Illinois  
Findlay, Illinois  
Franklin, Illinois  
Fulton, Missouri  
Grayville, Illinois  
Karnak, Illinois  
Lamoni, Iowa  
Louisville, Illinois  
Milford, Illinois  
New Boston, Illinois  
Perryville, Missouri  
Pinckneyville, Illinois  
Pittsfield, Illinois  
Plattsburg, Missouri  
Pleasant Hill, Illinois  
Riverton, Illinois  
Rossville, Illinois  
Tamms, Illinois  
Thebes, Illinois  
Vienna, Illinois  
Waverly, Illinois  
Westville, Illinois  
White Hall, Illinois  
Winchester, Illinois

## IMGA Eligible Utility

DD Farms, Inc.  
Graceland University  
Illinois State University  
Southern Illinois University-Carbondale  
Western Illinois University

## APGA Creates Sample Excess Flow Valve Notification Language

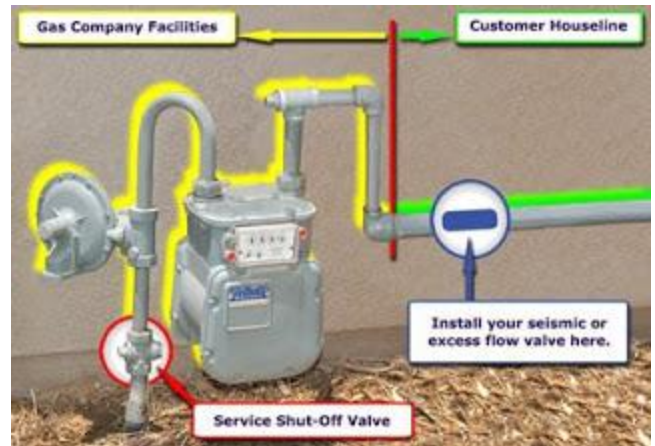
On April 14, 2017, a new regulation went into effect requiring all natural gas utilities to notify customers about excess flow valves (EFV) and install an EFV if the customer requests one. The notification must include the below details.

- ◆ An explanation for the service line customer of the potential safety benefits that may be derived from installing an EFV. The explanation must include information that an EFV is designed to shut off the flow of natural gas automatically if the service line breaks.
- ◆ A description of EFV installation and replacement costs. The notice must alert the customer that the costs for maintaining and replacing an EFV may later be incurred, and what those costs will be to the extent known.
- ◆ That if a service line customer requests installation of an EFV and the load does not exceed 1,000 SCFH and certain other conditions do not exist, the operator must install an EFV at a mutually agreeable date.

Notification can be either written or electronic. The regulation specifically lists emails, website postings, and e-billing notices as acceptable electronic notification methods.

APGA's Operations and Safety Committee has created sample notification language that members may use to create their own notification form. The sample language addresses all the mandatory items required by the regulation as well as some optional messages members may choose to add. Thanks is given to EFV manufacturer Hubbell for the diagram explaining the function of an EFV.

Copies of the sample EFV notification language can be found on APGA's website, [www.apga.org](http://www.apga.org)



ADDRESS SERVICE REQUESTED

Interstate Municipal Gas Agency  
1310 West Jefferson  
Auburn, IL 62615

PRESORTED  
STANDARD  
U.S. POSTAGE  
PAID  
SPRINGFIELD IL  
PERMIT NO 15